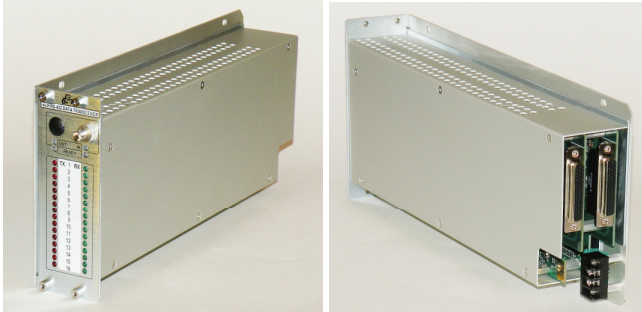


ECT4000 SERIES

ECT4032-L 32 CHANNEL UNIVERSAL DATA DIGITAL OPTICAL LINK WITH UP TO 130 km/80 mi RANGE



Data
32
→

ECT4032-L system provides high performance link for unidirectional (simplex) transmitting up to thirty two data signals over a single fiber optic cable.

The system features quality transmission of data signals with data rates DC – 8 Mb/sec.

ECT4032-L system utilizes high speed Digital Signal Processing, Time Division Multiplexing and Fibre Optic Transmission at a serial data rate of up to 1.4 Gbit/sec.

ORDERING INFORMATION

4032S-DHTN-X2Z-L - 32 Ch. data transmitter 1550 nm, 2 fiber

4032S-DHRN-X2Z-L - 32 Ch. data receiver 1200 – 1620 nm, 2 fiber

4032S-DHTN-X1Z-L - 32 Ch. data transmitter 1530 & 1570 nm, 1 fiber

4032S-DHRN-X1Z-L - 32 Ch. data receiver 1530 & 1570 nm, 1 fiber

- H** = 8 for maximum data rate in Mb/sec
- N** = 1 for TTL data format
- = 3 for RS-232 data format
- = 4 for RS-422 data format
- = 9 for contact closure
- X** = **M** for standalone module
- = **C** for rack card*
- Z** = **FC, SC** or **ST** for optical connector

*compatible with USR series chassis.

FEATURES

- ❑ High Speed Digital Transmission
- ❑ Up to 32 of Unidirectional TTL, RS-232, RS-422, Contact Closure Data Channels
- ❑ Wide Data Rate Range, DC – 8 Mb/sec
- ❑ Operating Range Up to 130 km / 80 miles
- ❑ Isolates EMI, RFI, Ground Loops
- ❑ Surface Mount Technology
- ❑ Power and Signal Status Indicators

Operating Wavelength	2 Fiber 1550 nm	1 Fiber 1530 & 1570 nm
Optical Core Diameter	8/10µ	
Optical Power Source	DFB Laser	
Optical Power Output	0 (+/- 0.5) dBm	
Receiver Sensitivity:		
Data Rates 1.6 Mb/sec	-42 dBm	
Data Rates 8 Mb/sec	-32 dBm	
Optical Connectors	FC, SC, ST	

Channel Capacity	Up to 16 of TTL, RS-232, RS-422, Contact Closure
Data Rate	DC – 1.6, 8 Mb/sec
Data (TTL, RS) Input Impedance	10K for TTL, 5K for RS-232, 120 Ohm for RS-422
Contact Closure Input Signal	Dry contact / TTL / CMOS
Contact Closure Output Signal	Dry contact @ load 24VAC or 30VDC/1A max
Power Requirements	11 - 15 VDC @ 700 mA
Operating Temperature	-30°C to +70°C (-22°F to +158°F)
Dimensions:	
module (w/o connectors)	11.6''(295 mm) x 5.2''(132 mm) x 2.0''(51 mm)
module (with connectors)	12.5''(318 mm) x 5.2''(132 mm) x 2.0''(51 mm)



Elcommtech Corp. 2620 Ocean Parkway, Suite 4H, Brooklyn, NY 11235
 Tel (718) 743-2869 • Fax (718)648-3642 • E-mail sales@elcommtech.com
<http://www.elcommtech.com>